

# MY SURECLICK<sup>®</sup> JOURNEY RESOURCE

A RESOURCE ROADMAP TO HELP SUPPORT YOUR  
SELF-INJECTION JOURNEY WITH THE 40 mg/0.4 mL  
AND 80 mg/0.8 mL CONCENTRATION FORMULATION  
(HCF) OF AMJEVITA<sup>™</sup>

Other dosage presentations/forms are also available. Be sure to read  
and follow the Instructions for Use that comes with your medication.

This resource is intended to provide you with an overview and basic information about the SureClick<sup>®</sup> Autoinjector and does not replace the Instructions for Use. Please review the Instructions for Use included with your prescribed medication prior to performing your injection. If you have further questions, please contact your doctor.



## GETTING STARTED WITH YOUR SURECLICK® AUTOINJECTOR

This resource is intended to provide you with an overview and basic information about the SureClick® Autoinjector (40 mg/0.4 mL and 80 mg/0.8 mL) and does not replace the Instructions for Use. Please review the Instructions for Use included with your prescribed medication prior to performing your injection. If you have further questions, please contact your doctor.



Instructions for Use

This resource roadmap may help you with questions about using the SureClick® Autoinjector.



# GETTING STARTED AT HOME WITH YOUR SURECLICK® AUTOINJECTOR



When you start using the SureClick® Autoinjector for the very first time, you may wonder if you're going to do it right.

You may have questions or feel uncertain about the process. Other patients feel the same. You are not alone.

There's a lot to learn, and you want to get it right. We're here to support you along the way.



With this resource and the online tools, you can do this...  
***Now, let's get started!***

Carefully review this educational booklet which offers additional helpful information just for you and your caregiver, including:

1. Key injection steps
2. Helpful tips
3. Resources and tools
4. Answers to frequently asked questions



# FIND A QUIET, CALM PLACE TO INJECT

## **Start off right and don't rush**

Find a quiet and calm place in your home, where pets or other people can't distract or interrupt you. Consider a room where you can close the door. Sit in a comfortable chair so you feel more relaxed.

This will soon become part of your routine.



# INJECT

In this section, we will discuss key steps for injecting the medication.

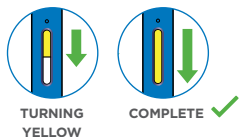


Please read the Instructions for Use for detailed information prior to starting the injection.

# GET TO KNOW YOUR SURECLICK® AUTOINJECTOR

## Introduction to the Autoinjector

- SureClick® Autoinjector is a ready-to-use Autoinjector prefilled with your medication
- Please read the Instructions for Use for detailed information prior to performing your injection



Make sure the medication in the window is clear and colorless to pale yellow

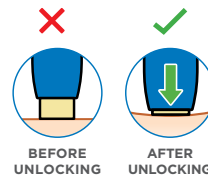
**WINDOW** will turn **yellow** during the injection



**START BUTTON** will work only after the safety guard has been unlocked

⚠ Be sure the light blue start button is at the top (facing up) and the cream-colored safety guard is at the bottom (faces down).

**SAFETY GUARD** unlocks the start button and covers the needle after injection is complete



⚠ **DO NOT** touch safety guard (needle inside).

⚠ **DO NOT** remove cap until ready to inject. Inject within **5 minutes** of removing cap.

⚠ **DO NOT** use the autoinjector if the carton is damaged or seal is broken.

# PREP | READY THE AUTOINJECTOR



Prep the Autoinjector by bringing it to room temperature.



Take out one Autoinjector that you need for the current injection

- Gather supplies, including sharps disposal container



Allow the Autoinjector to come to room temperature for 15 to 30 minutes before injecting

Use the Autoinjector within 5 minutes after removing the cap

- **DO NOT** remove the cap until you are ready to inject.
- Waiting longer than 5 minutes can dry out the medication

**DO NOT** freeze.

**DO NOT** put back in refrigerator once at room temperature.

**DO NOT** Discard medication if left out of the refrigerator after **14 days**.

**DO NOT** leave in car.

**DO NOT** leave the Autoinjector in direct sunlight.

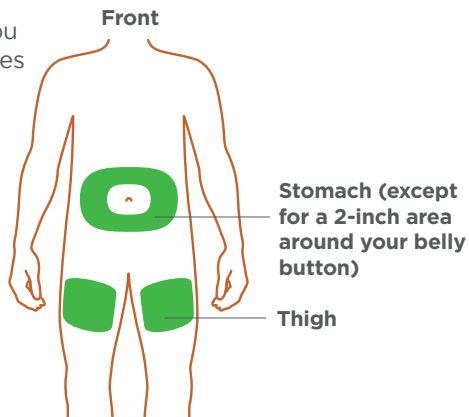
**DO NOT** warm or heat the Autoinjector.



# PREP | SELECT AND CLEAN THE INJECTION SITE

## Select the injection site for you or your caregiver

- Begin by gathering materials in a quiet, calm, and well-lit area. Choose a location to ensure you aren't interrupted. Place supplies on a flat surface
- Select an injection site
- Injection site can be your thigh or your stomach
- Clean your injection site with an alcohol wipe and let your skin dry on its own



- Wash hands before selecting and cleaning the injection site
- ⚠️ **DO NOT** inject through your clothes.
- ⚠️ **DO NOT** touch this area again before injecting.
- ⚠️ **DO NOT** inject into areas where the skin is tender, bruised, red, or hard.

### Tips!

- Pinch the skin to create a firm base
- Consider an injection site that has a thicker fatty layer
- Rotate your injection site each time you inject. Some people keep a diary or log to track their injection locations

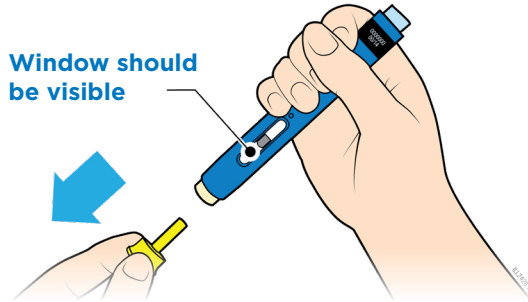


# INJECT | REMOVE THE CAP FROM THE AUTOINJECTOR



## Remove cap and inject within 5 minutes

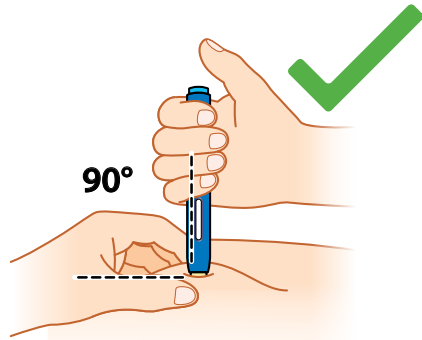
- If you have questions, seek help by referencing the Instructions for Use or calling **1-888-8AMJEVITA (1-888-826-5384)** before removing the cap



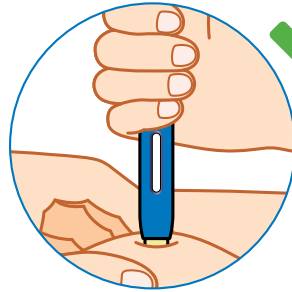
Use the Autoinjector  
within 5 minutes after  
removing the cap

- ⚠ **DO NOT** take the cap off until you are ready to inject, in order to prevent the medication from drying out.
- ⚠ **DO NOT** put the cap back onto the Autoinjector once it has been removed.

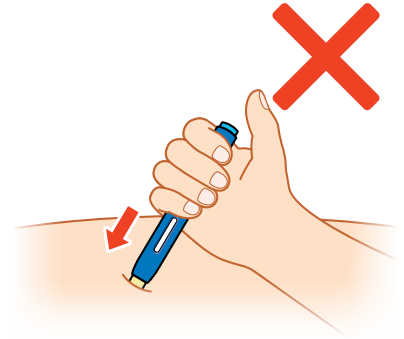
# INJECT | PLACE THE SAFETY GUARD ON THE SKIN AT A 90-DEGREE ANGLE



**Place** Autoinjector **straight down** at 90 degrees onto the skin.



Be sure you can see the entire medication window and that your fingers don't cover the window.



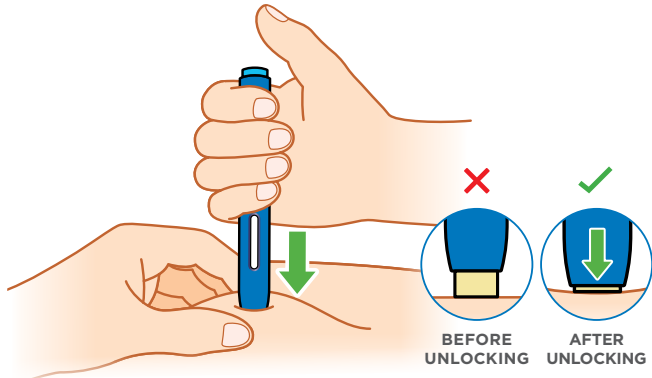
**DO NOT** apply the Autoinjector to the skin at an angle. You may not be able to make full contact with the skin, and that can prevent the Autoinjector from working properly.

**DO NOT** change positions after the injection has begun.

# INJECT | PUSH AUTOINJECTOR FIRMLY DOWN ONTO THE SKIN UNTIL THE CREAM SAFETY GUARD STOPS MOVING



To unlock the light blue start button, **PUSH** the autoinjector firmly onto the skin until you can't push it anymore.



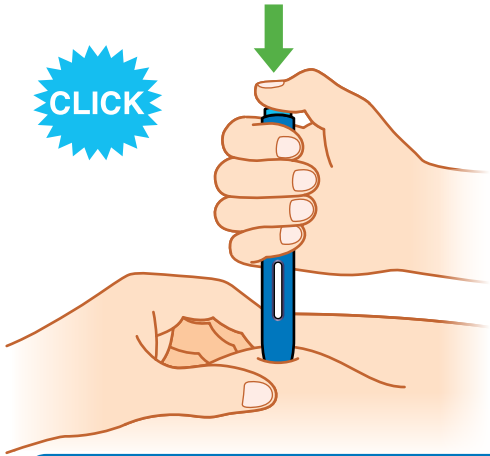
**PUSH** the autoinjector firmly down onto the skin until the cream-colored safety guard stops moving

- **PINCH** your skin to create a firm surface to push against
- **KEEP PUSHING. DO NOT LIFT**
- Start button will only work after the **SAFETY GUARD** has been pushed all the way in

**REMEMBER:** You **MUST** unlock the autoinjector by firmly pushing into your skin **WHILE** pressing the start button to perform the injection.

# INJECT | PRESS START BUTTON TO BEGIN INJECTION

Next, **PRESS** the light blue start button to start the flow of the medication



**PRESS** start button until you hear or feel a click

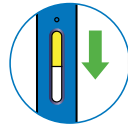
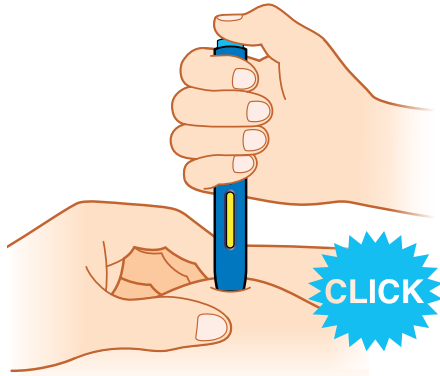
- **KEEP HOLDING** the Autoinjector down with the same pressure throughout the injection
- **START BUTTON** will work only after the safety guard has been pushed all the way in

- ⚠ If you do not hear or feel a click after pressing the start button, and the window is still clear, ensure that the safety guard is pushed all the way down first. Then try to press the button again.
- ⚠ These steps need to be completed in this order for a successful injection.

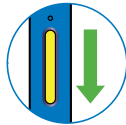
# INJECT | WATCH & CONFIRM MEDICATION WINDOW TURNS YELLOW



Finally, watch & confirm the medication window turns **YELLOW** to indicate the successful completion of the injection



TURNING  
YELLOW



COMPLETE



## WATCH & CONFIRM

window is fully **yellow**

- Continue holding the Autoinjector down on your skin until the medication window turns fully **yellow** to ensure all the medication has been injected
- The injection can take about **15 seconds**
- Fully **yellow** means it's **DONE!**

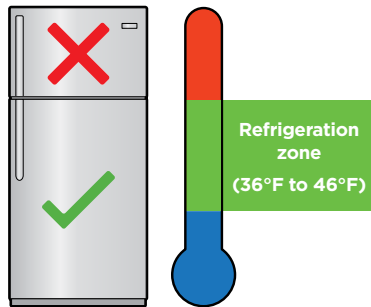
### ★ CONGRATULATIONS on reviewing the injection process!

Continue to practice the steps **PUSH, PRESS, WATCH & CONFIRM** to help build confidence. Start to make these simple steps a part of your routine, and be sure to contact your care team if you have any questions or concerns.



# STORAGE AND DISPOSAL

## Refrigeration guidelines:



**⚠ DO NOT** freeze Autoinjector.

- When you receive the Autoinjector, be sure to place it directly into the refrigerator
- Store Autoinjector in the refrigerator (36°F to 46°F) until ready to use
- Store Autoinjector in original carton to protect from light or physical damage
- Only remove the Autoinjector you plan to use

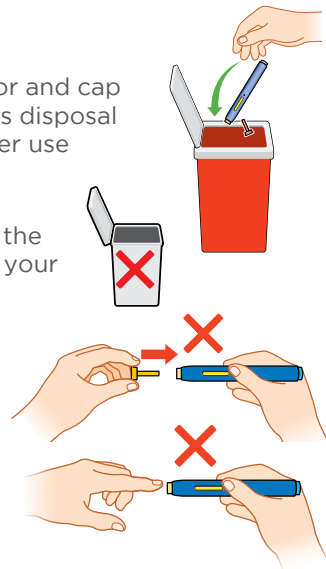
## Disposal guidelines:

- Put the used Autoinjector and cap in an FDA-cleared sharps disposal container right away after use

**⚠ DO NOT** throw away the Autoinjector or cap in your household trash.

**⚠ DO NOT** put the cap back on.

**⚠ DO NOT** touch the safety guard.



## CONGRATULATIONS

on reviewing the injection process!

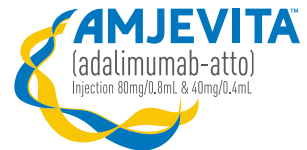
Continue to practice the steps at home.  
**PUSH, PRESS, WATCH & CONFIRM**...to help build confidence. Start to make these steps a part of your routine, and be sure to contact your care team if you have any questions or concerns.



# RESOURCES

In this section, we will discuss a variety of helpful resources available to you that are just a click or phone call away.

**AMGEN** Support<sup>+</sup>





# SURECLICK® AUTOINJECTOR SUPPLEMENTAL PATIENT SUPPORT IS AVAILABLE



You can connect with a dedicated Amgen® Nurse Partner by enrolling in Amgen® SupportPlus over the phone **1-888-8AMJEVITA Monday to Friday, 8AM-8PM ET** or online at [AMJEVITASupport.com](https://AMJEVITASupport.com)

## Additional Resources



[AMJEVITA.com](https://AMJEVITA.com)

## Injection Overview Video



Hold smartphone  
camera over QR code

## Amgen Nurse Partners\*



**1-888-8AMJEVITA (1-888-826-5384)**  
**8AM-8PM ET, Mon-Fri**

\*Amgen Nurse Partners are only available to patients that are prescribed certain Amgen products. They are not part of your treatment team and do not provide medical advice, nursing, or case management services. Amgen Nurse Partners will not inject patients with Amgen medications. Patients should always consult their healthcare provider regarding medical decisions or treatment concerns.



# FAQ

## TEMPERATURE CONTROL AND STORAGE:

**What is the best way to store my SureClick® Autoinjector?** Store in the refrigerator (36°F to 46°F) in its original box.

### **I left my Autoinjector outside of the refrigerator. Is this okay?**

Your Autoinjector can be stored at room temperature between 68°F to 77°F for up to **14 days** in its original box. Do not return to refrigerator once it reaches room temperature.

**Room temperature:  
Between 68°F to 77°F**



## ROOM TEMPERATURE GUIDELINES:

**Do I really have to wait 15 to 30 minutes for the Autoinjector to reach room temperature before injecting?** Yes. If you don't, it may take longer to complete the injection and you may experience discomfort.

## CAP REMOVAL QUESTIONS:

### **Why do I have to use the Autoinjector within 5 minutes after I remove the cap?**

If you wait longer than 5 minutes, the medication can dry out and clog the needle, resulting in failure to start injection.

### **How do I know the difference between the start button and the injection end?**

The start button is light blue and the safety guard is cream-colored. The medication window is closer to the safety guard.

 **DO NOT** touch the safety guard (needle inside).

## INJECTION SITE QUESTIONS:

**Why do I need to pinch the skin?** You need to **PINCH** the skin to create a **firm surface** and **to maintain a firm base** throughout the entire injection.

**Can I move the Autoinjector around on my skin?** Yes, it's okay to move **BEFORE** you **PUSH** the start button.

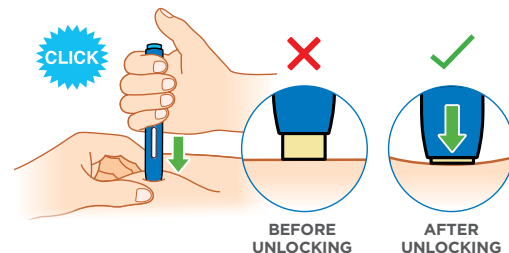
**⚠ DO NOT** move the Autoinjector **AFTER** you **PUSH** the **START** button, as you may not receive the full dose of medication.

## START BUTTON QUESTIONS:

**Do I press and release the start button or do I press and hold down the start button during the injection?** If you need to release your thumb, it's okay. Once the injection has started, do not lift the Autoinjector until the injection is complete.

**What will happen if I press the start button before I am ready to do the injection?** The Autoinjector will not work and will not dispense medication, unless the safety guard is unlocked prior to the start button activation.

**What if I am unable to push down the start button?** Check to see that the safety guard is no longer visible. If the safety guard is not depressed fully, the start button may not work. You will hear or feel a **CLICK** when the start button has been activated correctly.



# GENERAL TRAVEL GUIDANCE


## GENERAL TRAVEL GUIDANCE

Yes, you can travel with your Autoinjector so you can continue to take your injections. In fact, it's important that you don't miss your injection when traveling.

## SHORT TRIPS

### Traveling less than 14 days:

- Autoinjector can be kept at room temperature up to 77°F (25°C) in the original carton for up to 14 days without refrigeration

 Remember that once your Autoinjectors reach room temperature, you should not put them back in the fridge.

**Important:** Keep Autoinjector in original carton.



## LONGER TRIPS

### Traveling more than 14 days:

- Keep within the safe temperature zone
- Reach out to your pharmacist and/or doctor to discuss other options such as filling your prescription at your desired destination

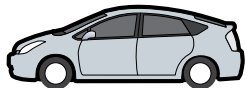


# CAR AND AIR TRAVEL GUIDANCE



## It's okay to travel via car:

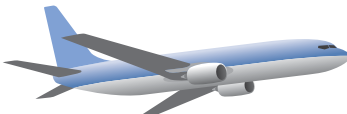
- ⚠️ **DO NOT** leave Autoinjector in car if exposed to extreme heat, extreme cold, or direct sunlight.
- Once Autoinjector reaches room temperature, do not put back in the refrigerator



## Traveling by airplane:

Before you travel

- Contact your airline about the carry-on policy for needles, syringes, or injection devices. Security regulations may change
- Research the injection device requirements of other countries you may visit
- Bring a copy of your prescription or a doctor's note to show airport security



## TSA or airport security considerations:

- Notify security screeners that you are carrying a sharps container
- Consider requesting a "hand check" of your medication kit to avoid any delays
- Be prepared to display, handle, and repack your own medication and supplies in order to prevent contamination or damage



**IF YOU NEED SUPPORT,  
CONTACT YOUR HEALTHCARE  
PROVIDER, OR:**

- **CALL 1-888-8AMJEVITA  
(1-888-826-5384), 8AM-8PM ET, Mon-Fri**
- **VISIT [AMJEVITA.com](https://www.amjevita.com)**



**Please click for AMJEVITA™ full [Prescribing Information](#), including [Medication Guide](#) and [Instructions for Use](#).**



© 2023 Amgen Inc.  
All rights reserved. Not for Reproduction. USA-501-80478

